



**Director's Update Brief**  
**novel 2009-H1N1**

**Tuesday**  
**28 JUL 2009 1100 EDT**

**Day 101**

**Week of Consultation and Finalizing Plans**



## Key Events



### novel 2009-H1N1 – 28 JUL 2009

---

- novel 2009-H1N1 Declarations
  - WHO: Pandemic Phase 6 (11 JUN 2009 1600 EDT)
    - Outbreaks in at least one country in > two WHO regions
  - USG: Public Health Emergency declared (26 Apr 2009)
  - HHS: Downgraded to Phase 1 – Awareness (9 May 2009)
  
- US Cases (as of 23 July 2009; next update 30 July 2009)

US TOTALS	CASES	HOSPS	DEATHS
CASES	43,771	5,011	302
SLTTs AFFECTED	55	47	28



# International Global Update



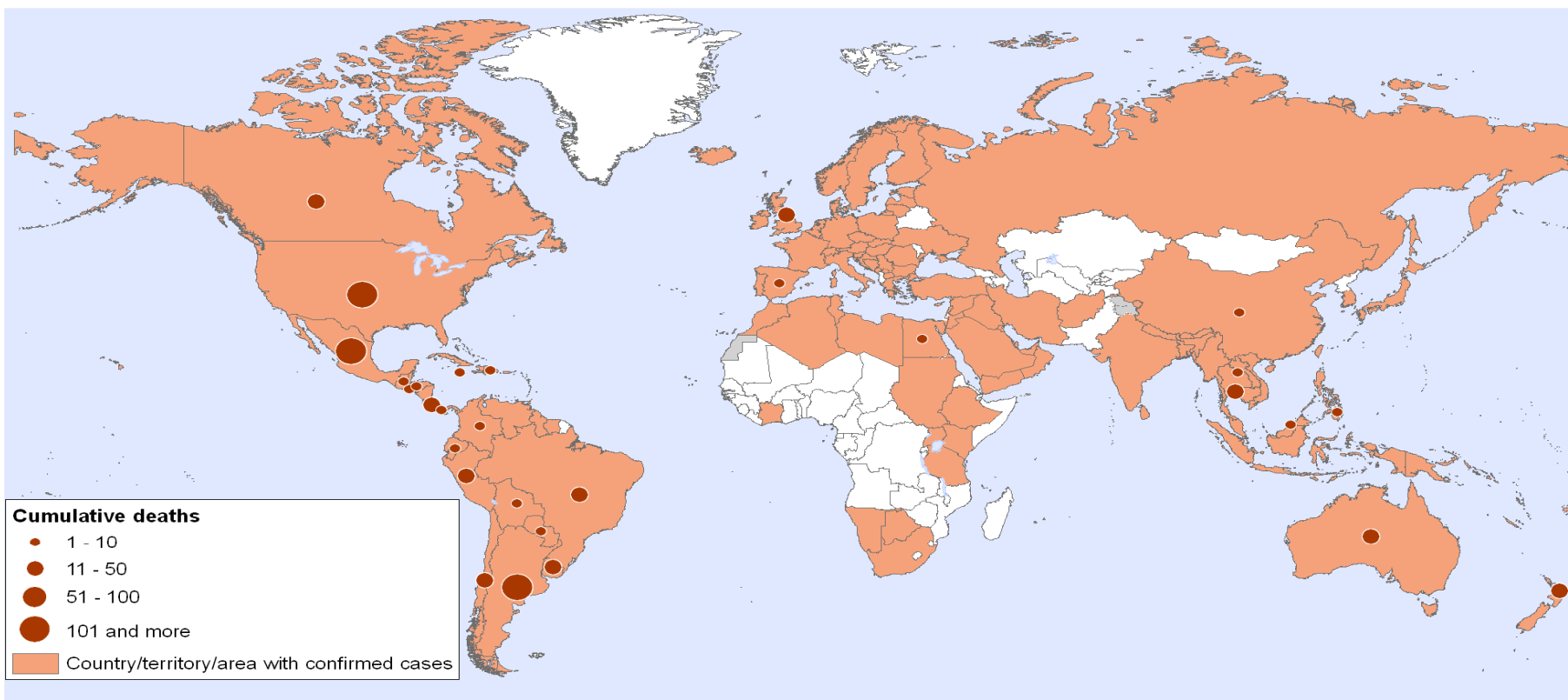
Novel 2009-H1N1 – 28 JUL 2009

As of July 27, WHO reports 134,503 cases and 816 deaths

Pandemic (H1N1) 2009,

Status as of 22 July 2009

Countries, territories and areas with lab confirmed cases and number of deaths as reported to WHO



The boundaries and names shown and the designations used on this map do not imply the expression of any opinion whatsoever on the part of the World Health Organization concerning the legal status of any country, territory, city or area or of its authorities, or concerning the delimitation of its frontiers or boundaries. Dotted lines on maps represent approximate border lines for which there may not yet be full agreement.

Map produced: 24 July 2009 10:00 GMT

Data Source: World Health Organization  
Map Production: Public Health Information  
and Geographic Information Systems (GIS)  
World Health Organization



© WHO 2009. All rights reserved



International  
**Key Points About Severity in the Southern Hemisphere**  
Novel 2009-H1N1 – 28 JUL 2009



**Argentina:** > 3,000 cases, 137 deaths

**Chile:** >11,000 cases, 79 deaths

**Australia:** >17,000 cases, 50 deaths

**Mexico:** >12,000 cases, 124 deaths

- 1) Most less-severe illness is not being confirmed
  - 2) A concurrent rise in less-severe disease accompanies reports of severe cases
  - 3) Shifts in testing practices to focus on more severe cases affect CFRs
  - 4) Current viruses look similar to A/California/2009
  - 5) Adjusting for population size also reduces observed disparities in severity
  - 6) Epidemiology remains similar across countries
- **Currently no evidence to suggest something is “different” in one particular country**



**Epidemiology/Surveillance**  
**novel 2009-H1N1 – 28 JUL 2009**  
**Pregnancy Publication in Lancet**



- H1N1 2009 influenza virus infection during pregnancy in the USA
  - Lancet, online publication Wednesday, July 29; in print Aug 8
  - **EMBARGOED UNTIL 9 AM (London) on Wednesday, 7/29/09**
- Paper highlights
  - Pregnant women are at an increased risk for pregnancy complications if infected with an influenza virus, including increased risk of hospitalization
  - Need for prompt treatment (within 48 hours of symptom onset)
    - Frequent delays in treatment, particularly in fatal cases
- Ongoing review of novel H1N1 deaths in US
  - 15/266 (6%) deaths were in pregnant women
- Efforts to establish a study of influenza infection in pregnancy in selected sites for the fall 2009 are ongoing



## Laboratory



novel 2009-H1N1- 28 JUL 2009

---

### Testing for Antiviral Sensitivity Among Influenza Virus Isolates and Clinical Specimens

- **No changes in resistance patterns noted in seasonal or novel 2009 H1N1 virus isolates**
  - **In addition to virus isolates, 235 clinical specimens from novel 2009 H1N1 cases tested**
  - **No viruses with oseltamivir-resistance mutation H274Y**
- **No additional dually-resistant seasonal H1N1 viruses found**
  - **Total remains five (3 US, 2 China)**



## Community Measures Task Force (CMTF)



novel 2009-H1N1 – 28 JUL 2009

---

- Exclusion guidance sent for HHS clearance
  - Recommendations for the amount of time persons with influenza-like illness should be away from others
- Comprehensive school guidance needs to clear CDC on July 31
  - Plan to share with interagency (DoL, DHS, USDA)
  - Meeting held July 22 by interagency asked USDA, DoL and DHS to explore steps to reduce effects of nonpharmaceutical interventions
- Working on business guidance with DHS that aligns with “tiers”
- Camp closures: 5 additional closures since July 23
  - 80 closures in 40 states (including PR)
- Camps with ILI cases: 132 additional camps with ILI cases since July 23
  - 183 camps with cases
  - 4 states with cases in camps but no closures: ME, MS, RI, AL



## Joint Information Center (JIC)



novel 2009-H1N1 – 28 JUL 2009

- **Conference call with U.S. Embassy in Iraq re first H1N1 case in Embassy staff on July 27.**
  - The CDC/WHO material developed for mass gatherings (specifically for the annual pilgrimage to the Haj) was recommended for dissemination as well as other information concerning masks, hand hygiene, symptom monitoring, and social distancing.
- **PAHO/HHS hosted a lessons learned meeting on July 22 at PAHO HQ in Washington, D.C.**
  - Senior-level communicators from PAHO, WHO, HHS, CDC, and MOHs representing 21 countries attended.
  - Drs. Glen Nowak and Marsha Vanderford presented on CDC's response.
- **Health communication strategy meeting scheduled on July 29 at Wal-Mart Headquarters.** 3 CDC communicators will participate and provide recommended health message materials for wide dissemination.
- **HHS, DHS, Ed, and CDC unveil school guidance in Plan First Webcast with Mayors and local officials on August 5 at 1:00 p.m.**





## **Supporting Documentation**



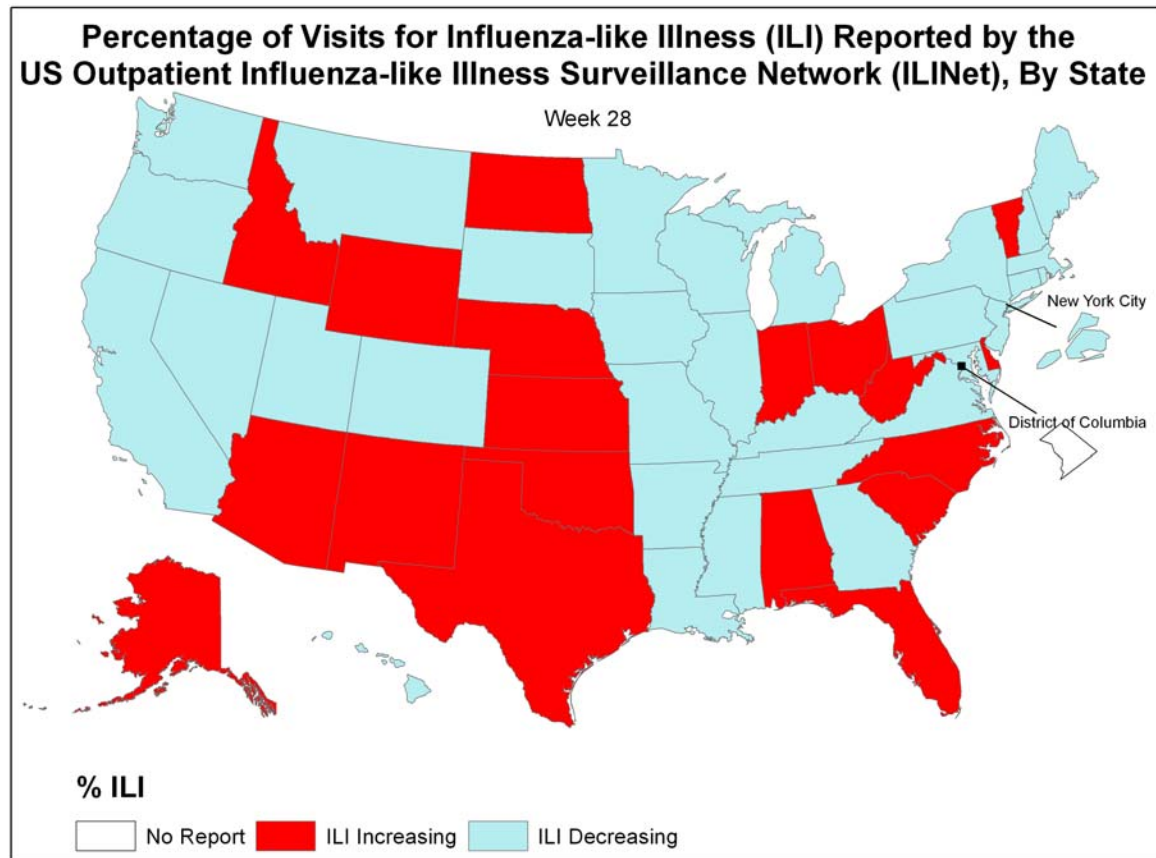
## Epidemiology/Surveillance novel 2009-H1N1 – 28 JUL 2009 Communications for Web Posting



- Reminder – last week for case counts on cdc.gov
  - Q&A to explain transition
- Novel H1N1 Facts and Figures *New and coming soon*
  - Descriptive epidemiology slides with text
  - Surveillance data with interpretations
    - Presented as map showing activity by state
    - Weekly updates



# Epidemiology/Surveillance novel 2009-H1N1 – 28 JUL 2009 ILI Weather Map



## Influenza-Like Illness Weather map

This slide shows states increasing (red) or decreasing (blue) in percent of visits for ILI relative to the average previous 3 weeks

- 19 states report increases in illness
- Most states reported decreased in levels of illness

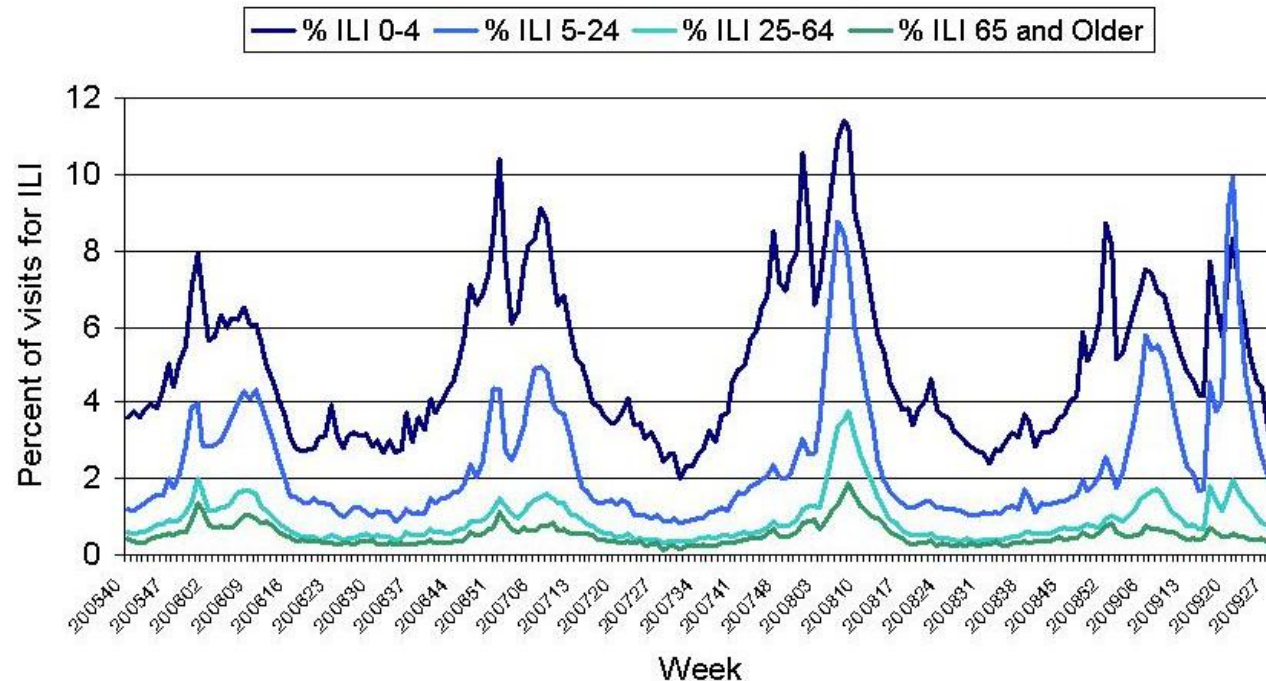
Data are provisional use only (FIUO)---For Official Use Only (FOUO) until 1100 EDT



## Epidemiology/Surveillance novel 2009-H1N1 – 28 JUL 2009 Influenza-Like Illness by Age Group



Percentage of Visits for Influenza-like Illness (ILI) Reported by the US Outpatient Influenza-like Illness Surveillance Network (ILINet), National Summary 2008-09 and Previous Three Seasons, By Age



### Influenza-Like Illness by Age Group

This slide shows percent of visits for ILI by age group

- 2008-09 season has increase in 15-24 age group compared to previous seasons
- Levels of activity declined in all age groups during the last reporting week

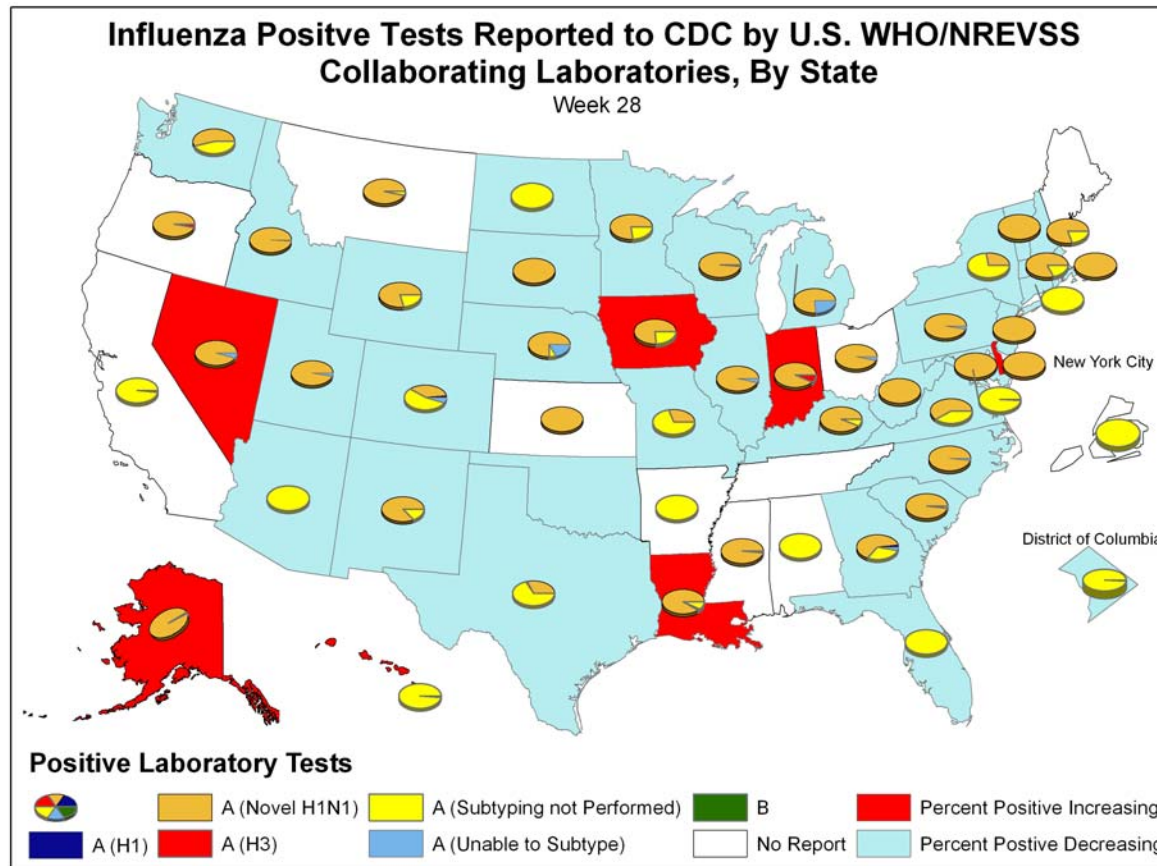
Data are provisional Use Only (FIUO) or for Official Use Only (FOUO) until 1100 EDT



# Epidemiology/Surveillance

## novel 2009-H1N1 – 28 JUL 2009

### Virus Weather Map



### Virus Weather Map

This slide shows states increasing (red) or decreasing (blue) in percent of specimens for influenza relative to the average previous 3 weeks; pie charts are 3 weeks of influenza subtype data

- Only 5 states report increase in % positive
- Novel H1N1 predominate virus

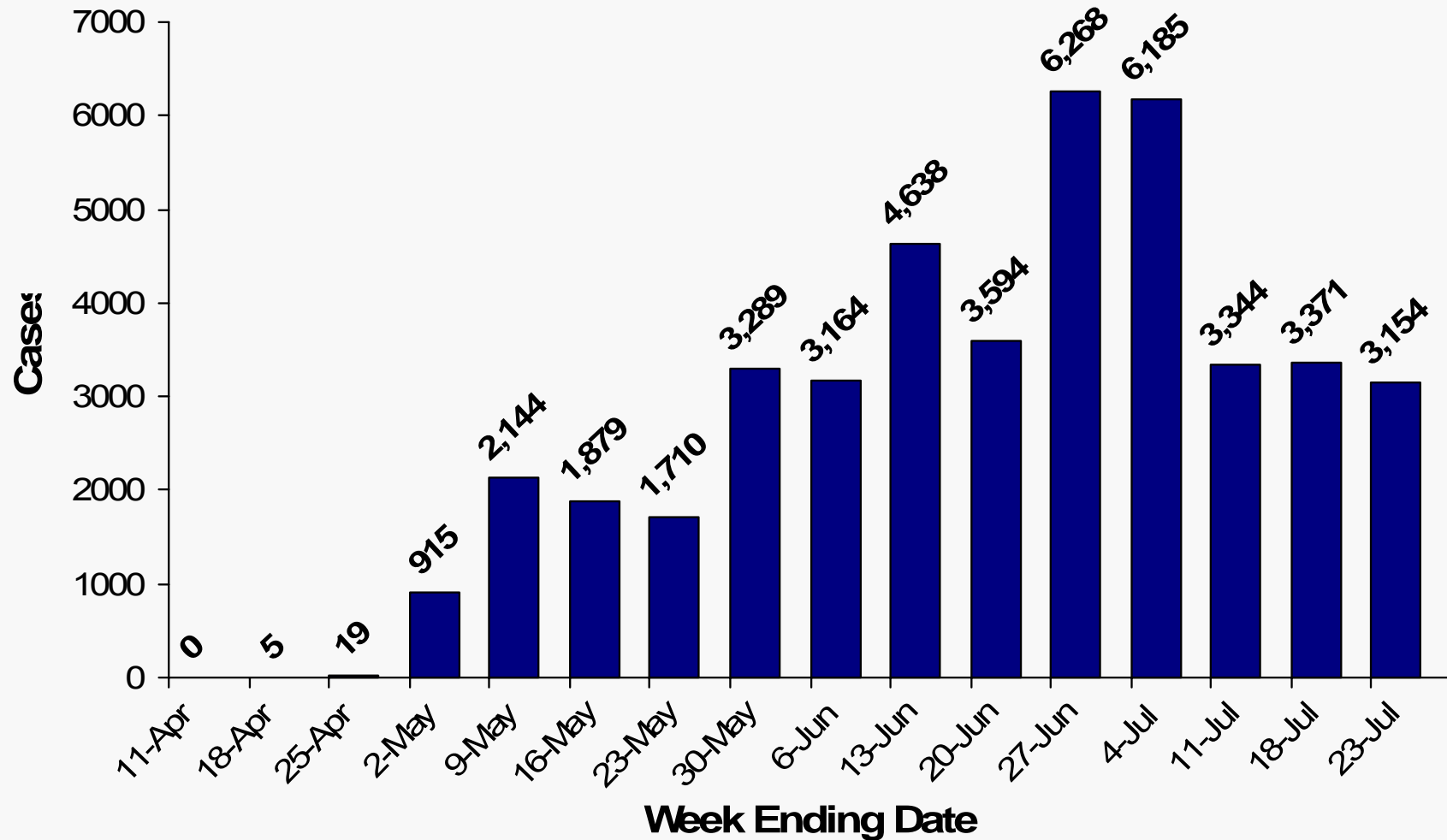
Data are provisional use only (FIUO) official use only (FOUO) until 1100 EDT



# Epidemiology/Surveillance

## Cases by Report Date

novel 2009-H1N1 – 28 JUL 2009 (n=43,771) (Weekly\*)

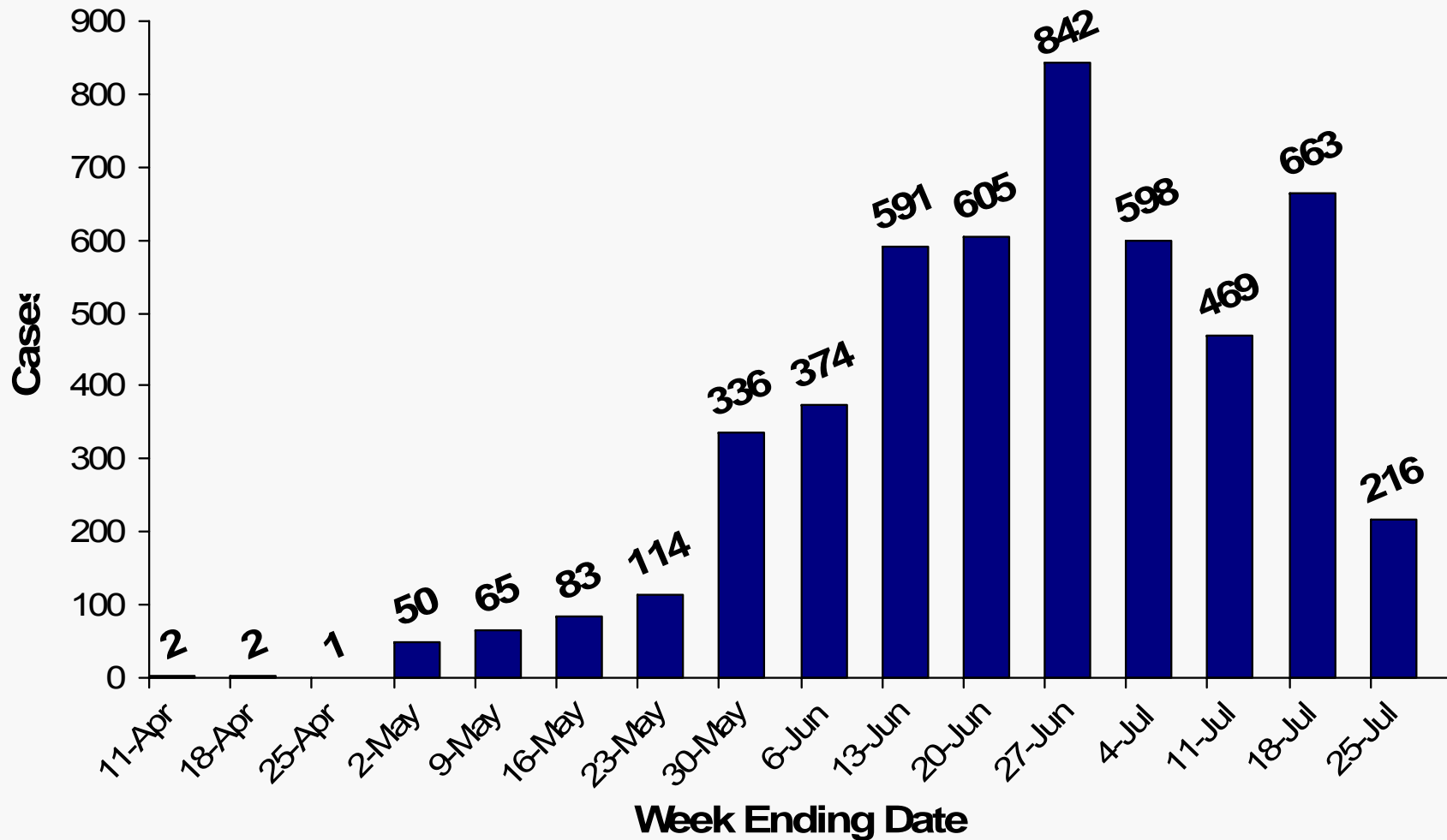


\*Data for week ending 4 July 2009 include reports submitted by 7/9/09 11:00 AM.

Dates not available for 92 cases.



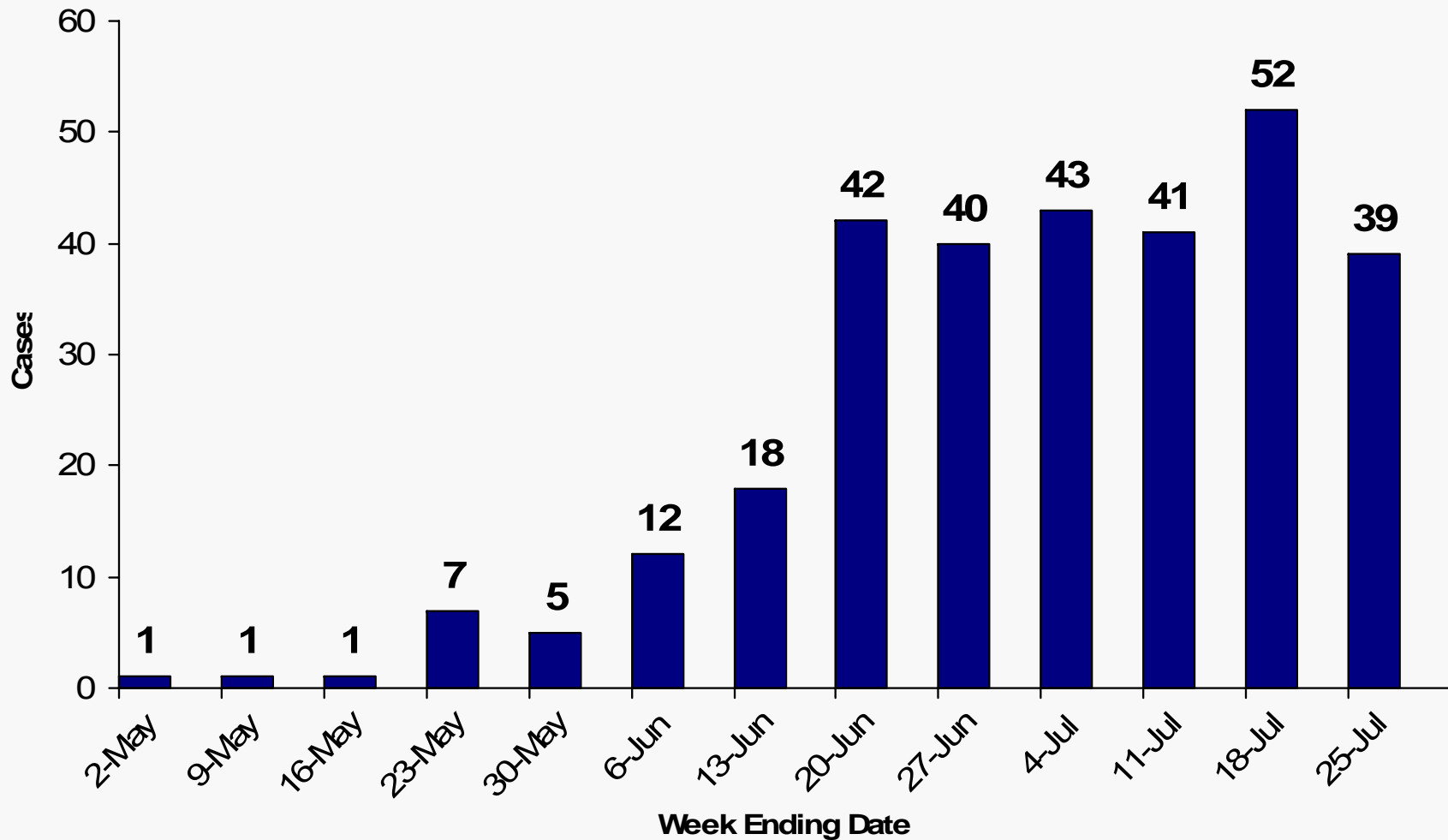
# Epidemiology/Surveillance Hospitalizations by Report Date novel 2009-H1N1 – 28 JUL 2009 (n=5,011) (Weekly\*)



\*Data for week ending 25 July 2009 include reports submitted between 1:00 AM EDT 6/25/2009 and 11:00 AM.



# Epidemiology/Surveillance Deaths by Report Date novel 2009-H1N1 – 28 JUL 2009 (n=302) (Weekly\*)

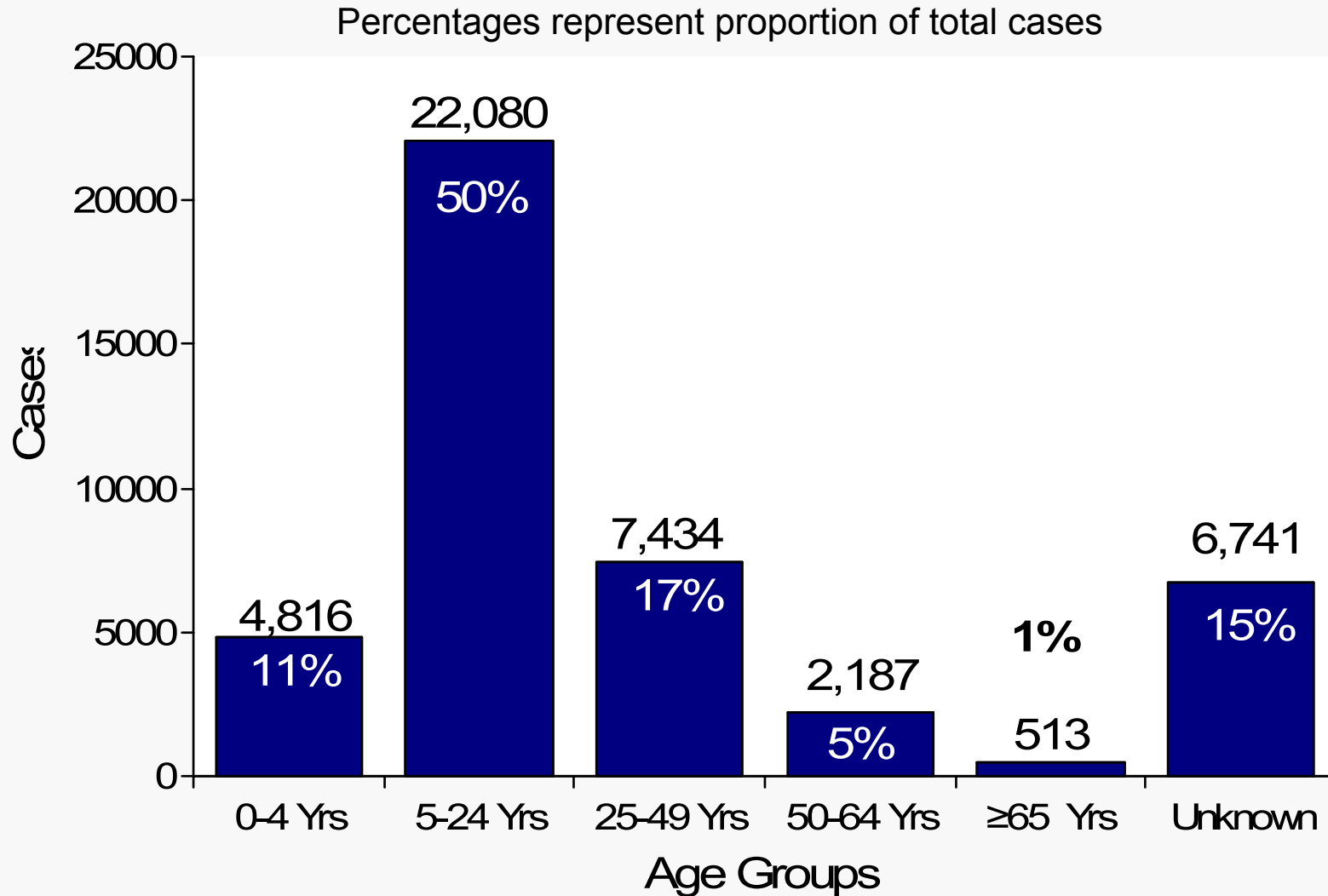


\*Data for week ending 25 July 2009 include reports submitted between 1:00 AM EDT 6/25/2009 and 11:00 AM.





# Epidemiology/Surveillance Cases by Age Group novel 2009-H1N1 – 28 JUL 2009 (n=43,771)

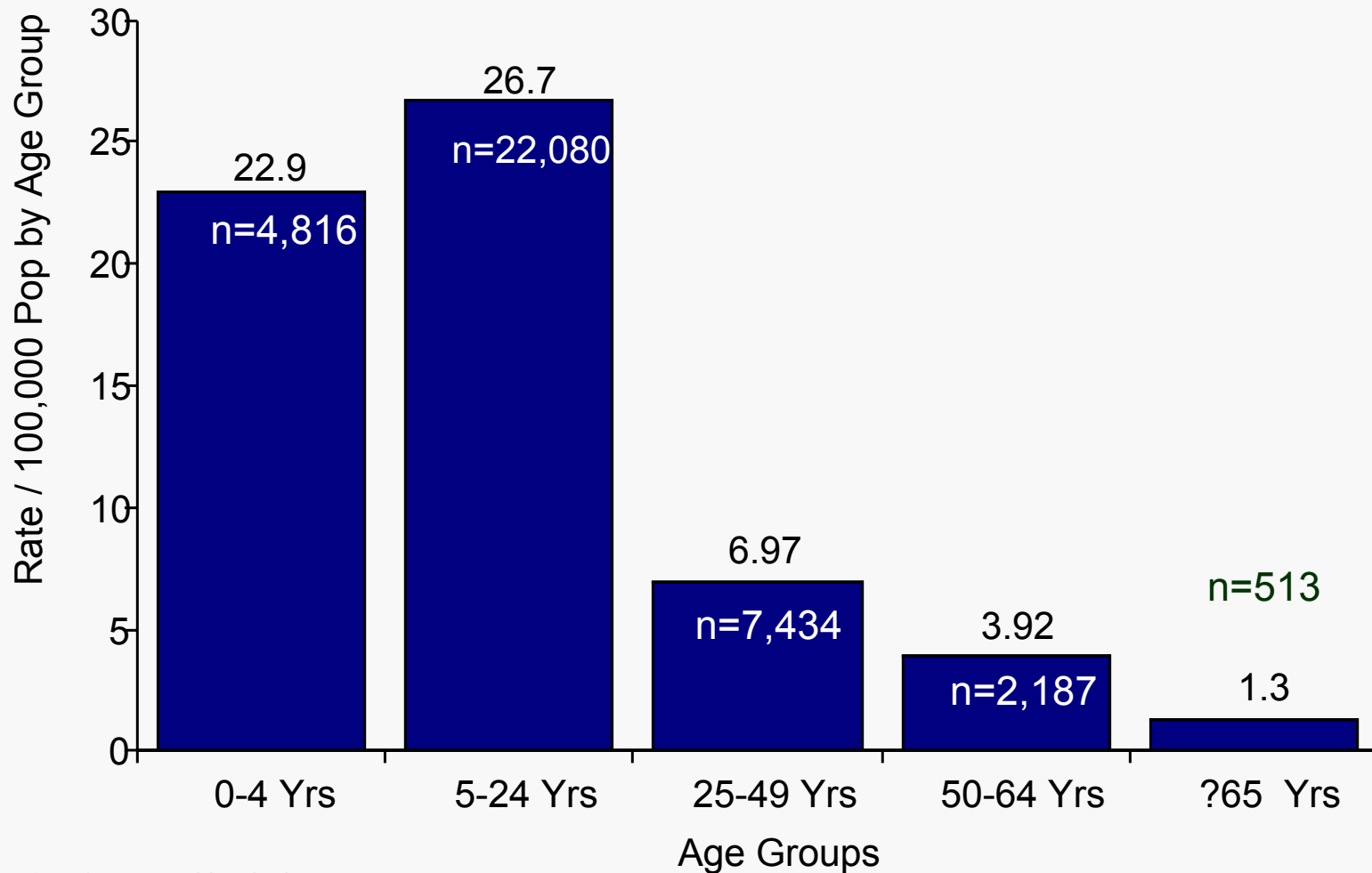




# Epidemiology/Surveillance

## Rate per 100,000 Population by Age Group

### novel 2009-H1N1 – 28 JUL 2009 (n=37,030\*)



\*Excludes 6,741 cases with missing ages.

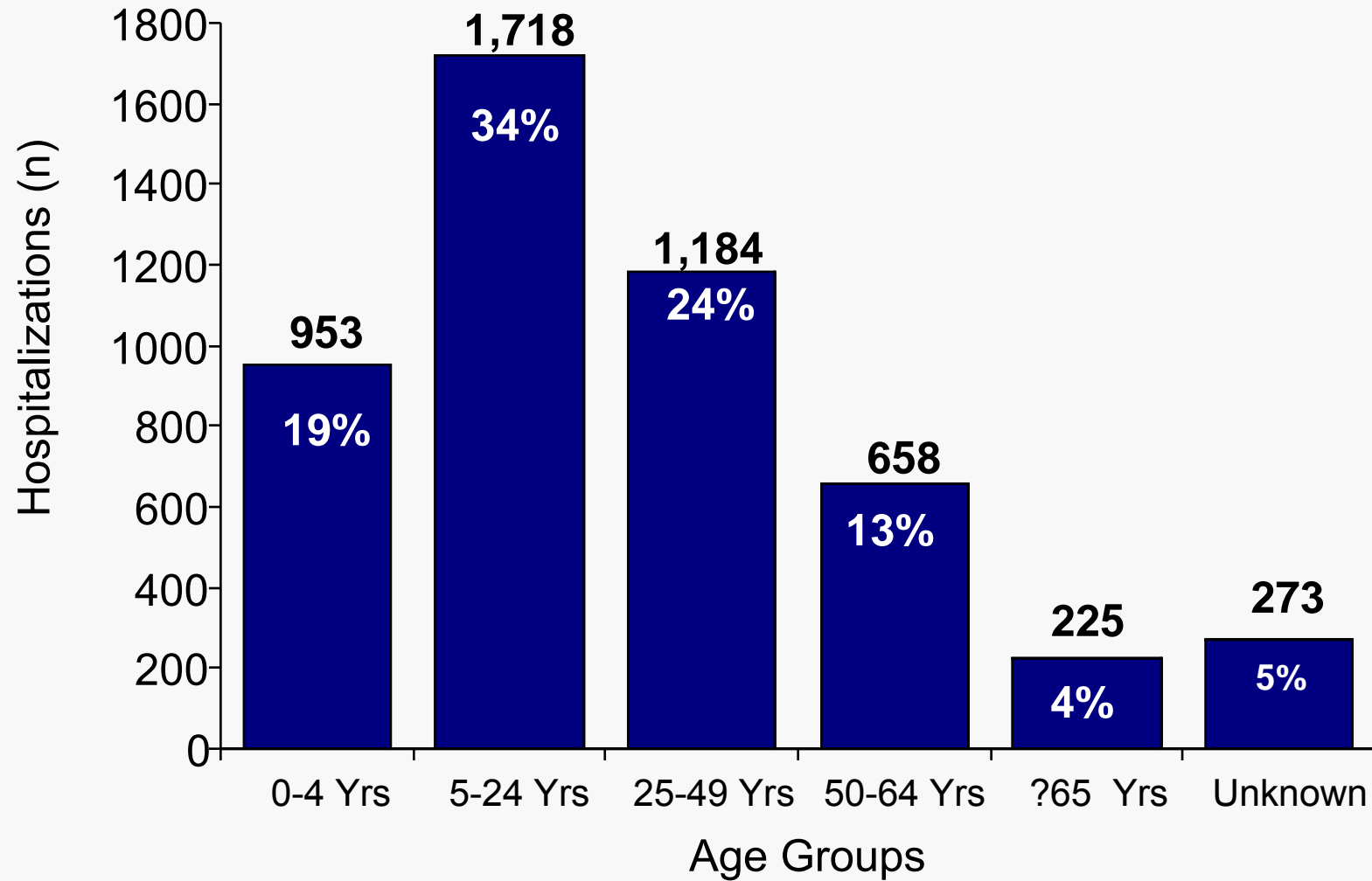
Rate / 100,000 by Single Year Age Groups: Denominator source: 2008 Census Estimates, U.S. Census Bureau at:  
<http://www.census.gov/popest/national/asrh/files/NC-EST2007-ALLDATA-R-File24.csv>



# Epidemiology/Surveillance Hospitalizations by Age Group novel 2009-H1N1 – 28 JUL 2009 (n=5,011)



Percentages Represent Proportion of Total Hospitalizations

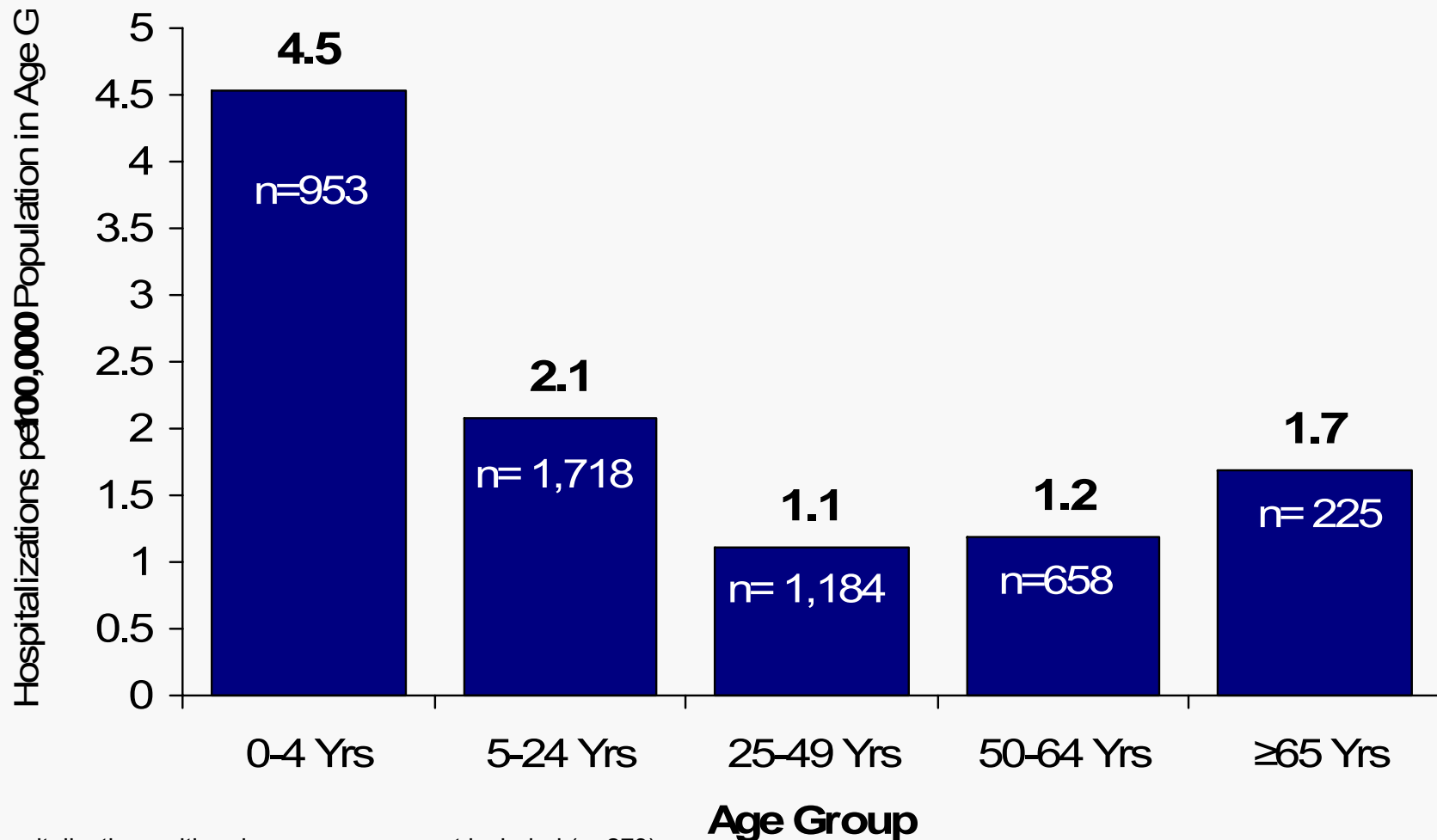




# Epidemiology/Surveillance

## Hospitalization Rate per 100,000 Population by Age Group (n=4,738\*)

### novel 2009-H1N1 – 28 JUL 2009



\*Hospitalizations with unknown ages are not included (n=273)

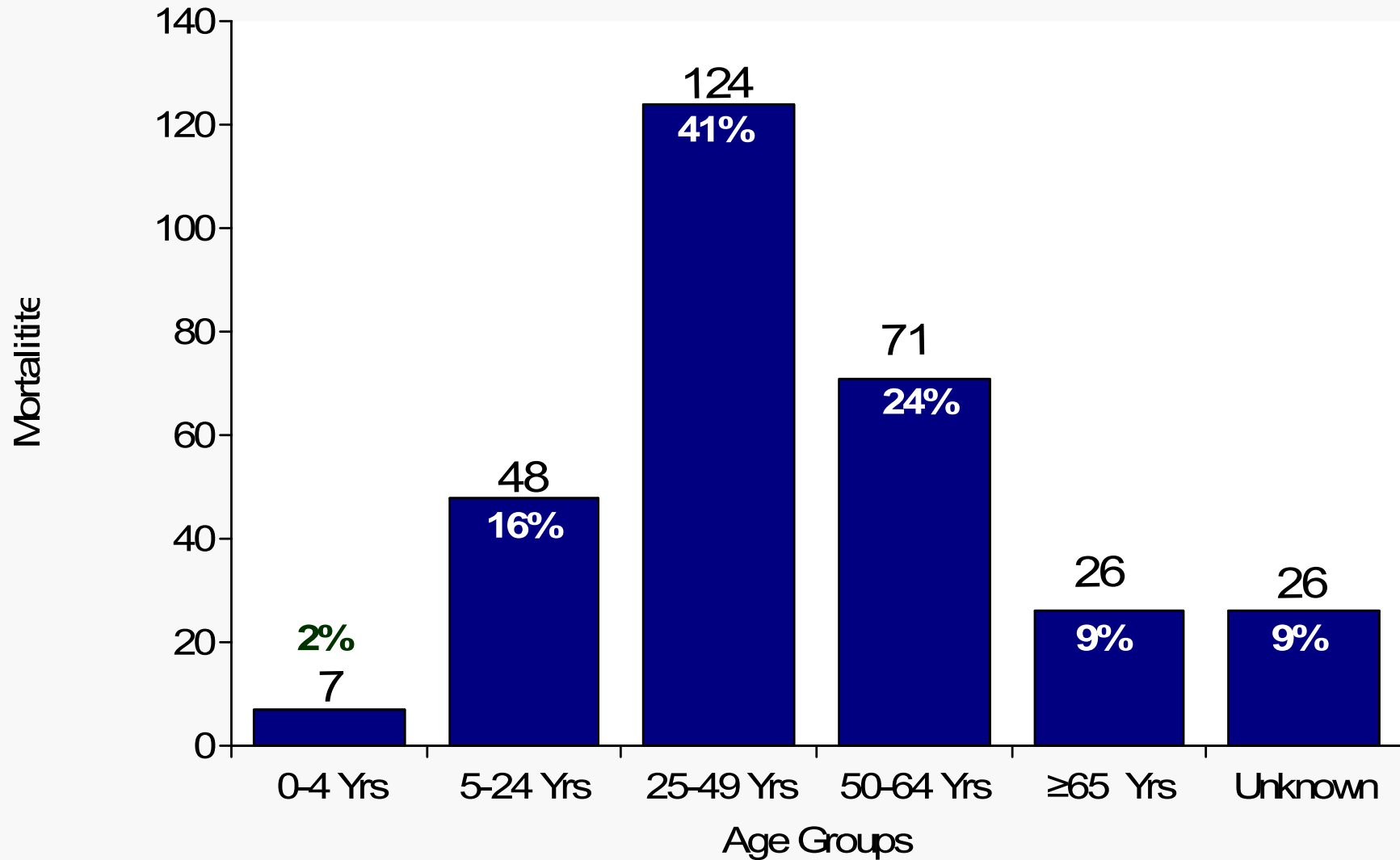
\*Rate / 100,000 by Single Year Age Groups: Denominator source: 2008 Census Estimates, U.S. Census Bureau at:  
<http://www.census.gov/popest/national/asrh/files/NC-EST2007-ALLDATA-R-File24.csv>



# Epidemiology/Surveillance

## Deaths by Age Group

novel 2009-H1N1 – 28 JUL 2009 (n=302)

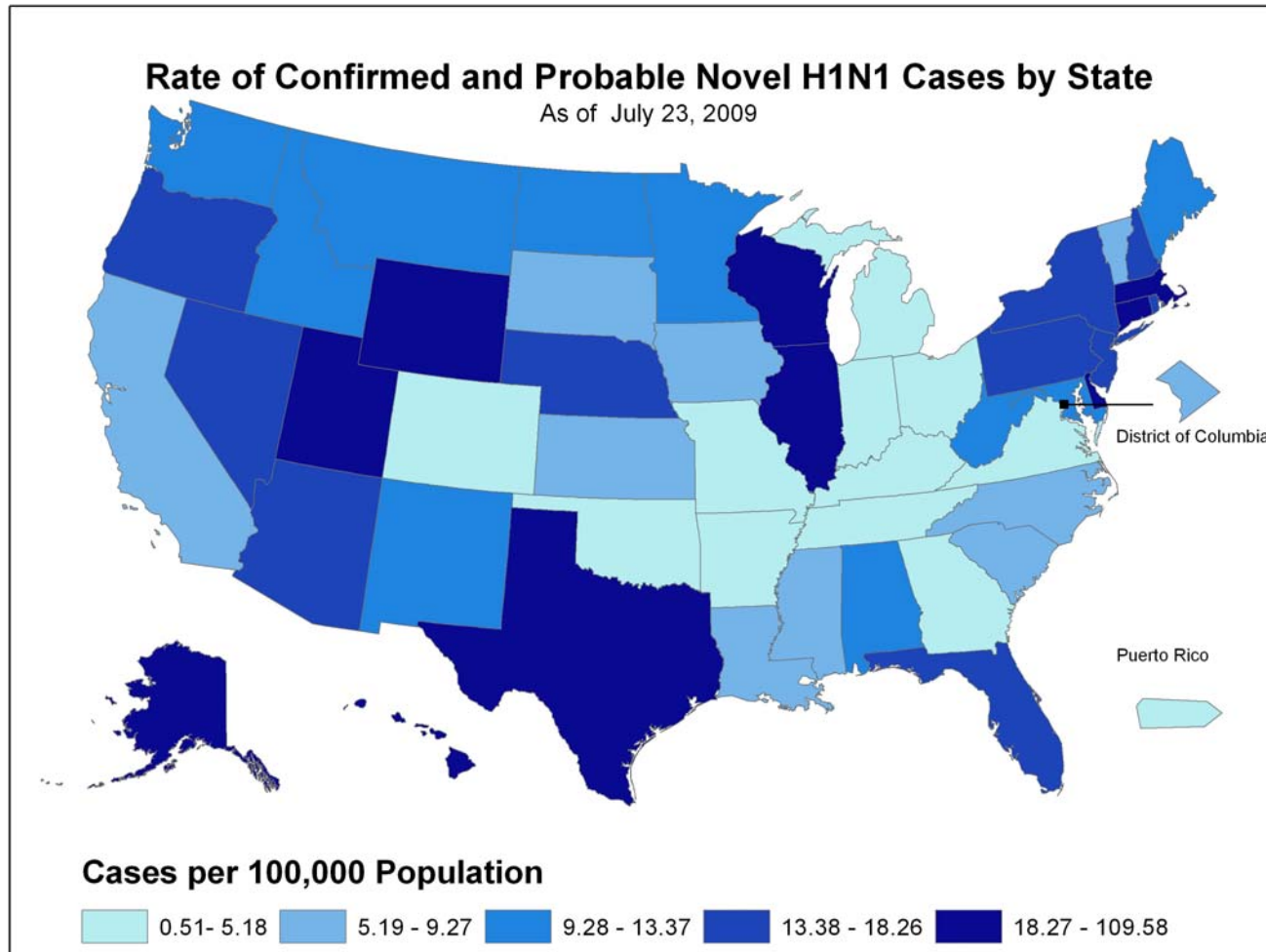




# Epidemiology/Surveillance

## Cases by State - Rate / 100,000 State Population

### novel 2009-H1N1 – 28 JUL 2009



Data are provisional use only (FIUO)---For Official Use Only (FOUO) until 1100 EDT

Internal Use Only (FIUO)---For Official Use Only (FOUO) NOT FOR FURTHER DISTRIBUTION -Sensitive But Unclassified (SBU)



## Epidemiology/Surveillance Surveillance Systems Summary novel 2009-H1N1 – 28 JUL 2009



- **WHO/NREVSS Collaborating Laboratories**
  - Seasonal A (H1), A (H3), and B viruses co-circulated with Novel H1N1 viruses
  - % of specimens testing positive for influenza decreased
- **ILINet (week ending 18 July)**
  - % of ILI outpatient visits is below the national baseline
  - Overall, the % of outpatient visits for ILI decreased slightly
- **122 Cities Mortality Reporting System (graph)**
  - % pneumonia and influenza deaths was slightly above the epidemic threshold
  - % deaths due to pneumonia and influenza increased slightly
- **Geographic Spread of Influenza as Assessed by State and Territorial Epidemiologists – state reporting:**
  - Widespread: 7 states
  - Local: DC + 13 states
  - Regional: PR + 13 states
  - Sporadic: 17 states

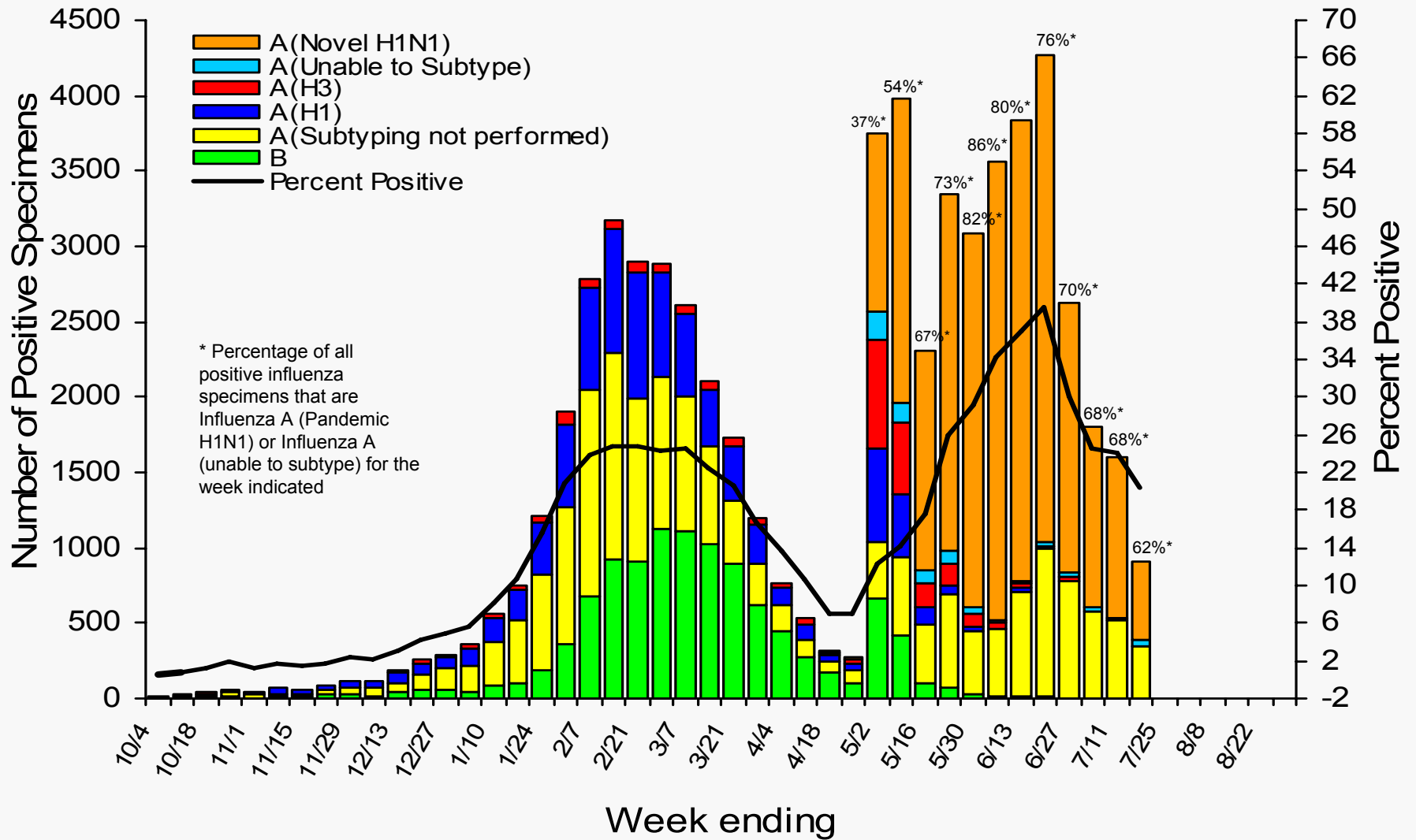
Data are provisional Use Only (FIUO)---For Official Use Only (FOUO) until 1100 EDT



# Epidemiology/Surveillance

## U.S. WHO/NREVSS Collaborating Laboratories Summary, 2008-09

### novel 2009-H1N1 – 28 JUL 2009



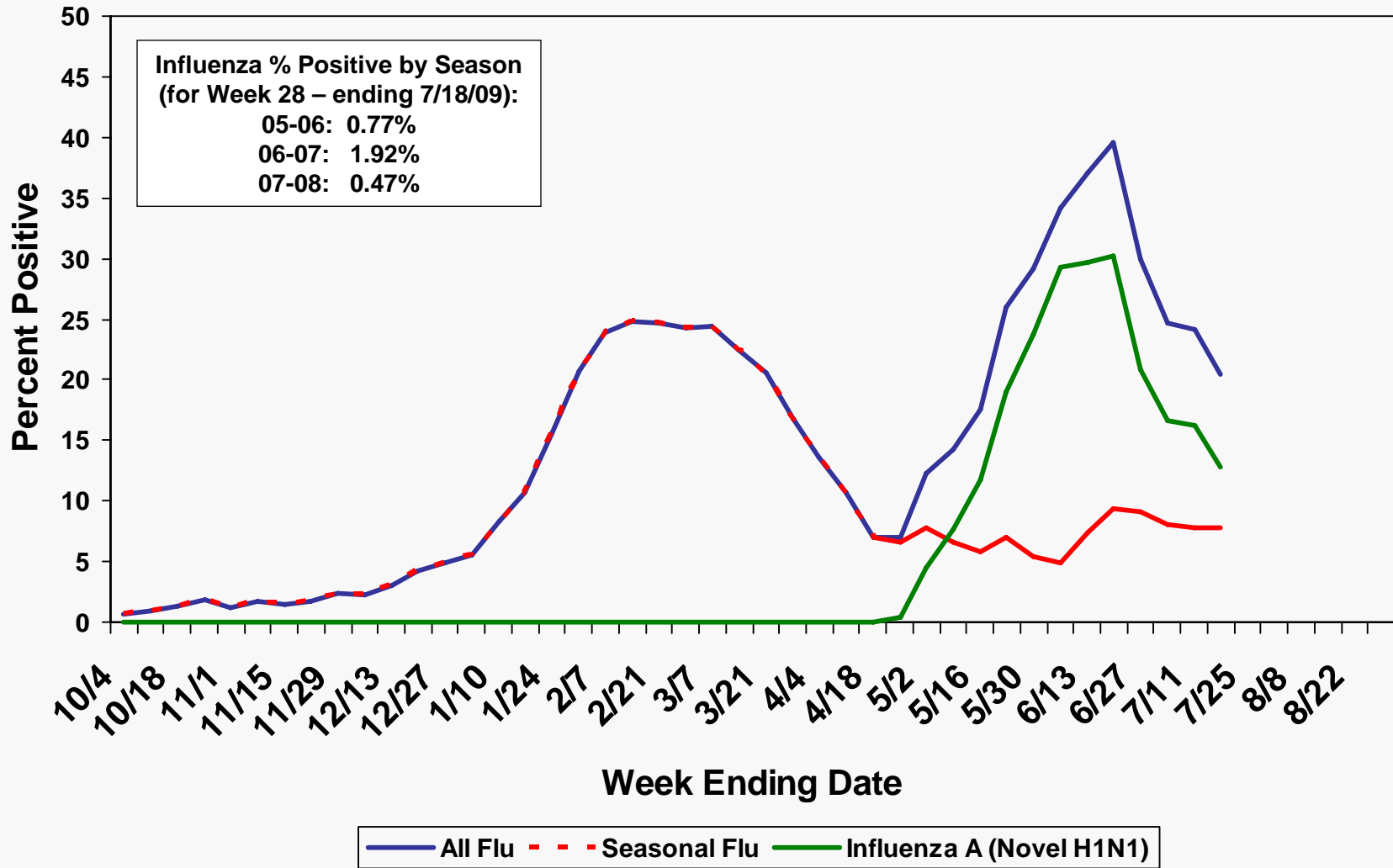
Data are provisional use only (FIU) or official use only (FOUO) until 1100 EDT

Internal Use Only (FIUO)---For Official Use Only (FOUO) NOT FOR FURTHER DISTRIBUTION -Sensitive But Unclassified (SBU)





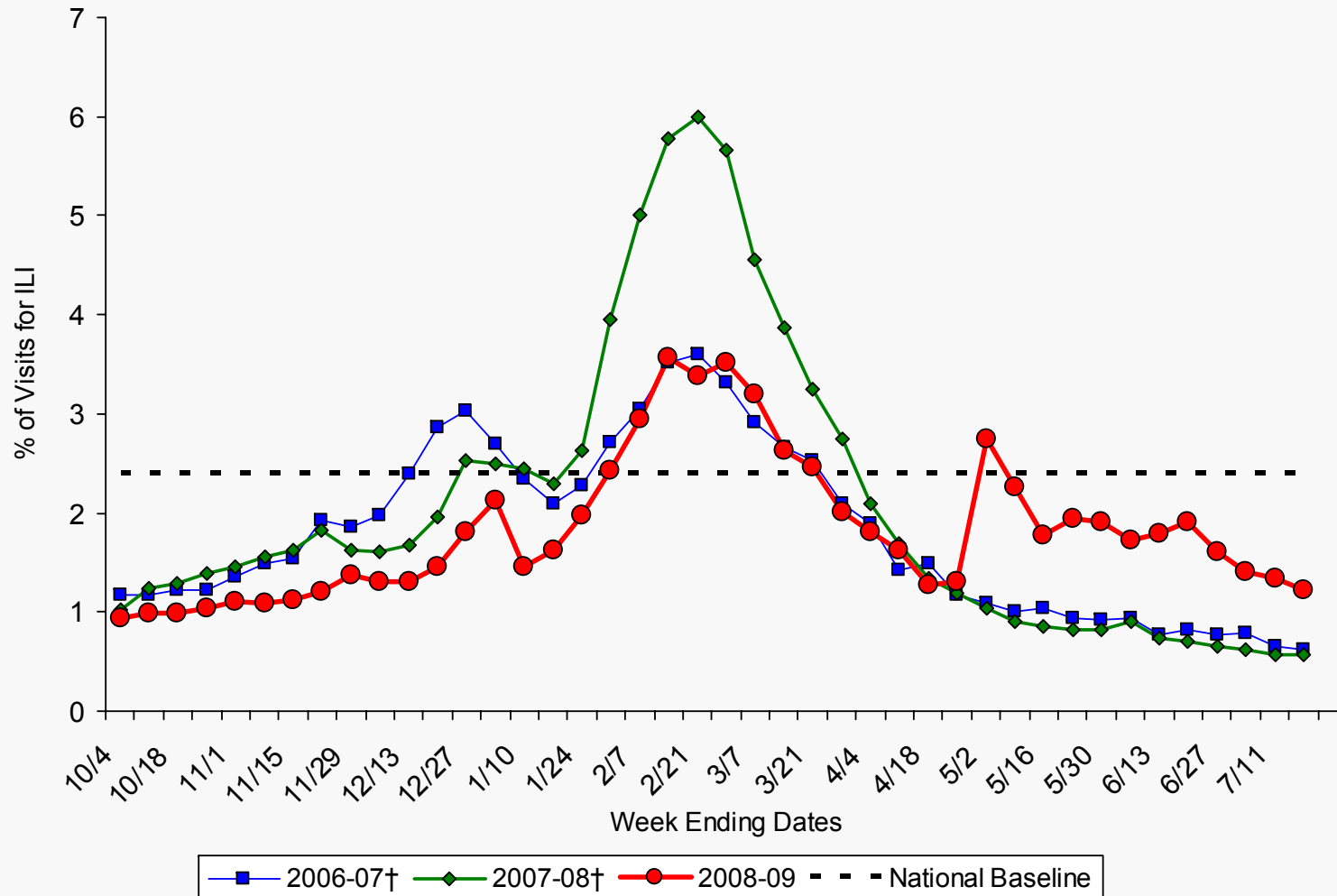
**Epidemiology/Surveillance**  
**Percent of Specimens Positive for Influenza Reported by WHO and NREVSS**  
**Labs: Novel Influenza A(H1N1) vs. Seasonal Influenza, by Week**  
**novel 2009-H1N1 – 28 JUL 2009**



**Data are provisional Use Only (FIUO) or Official Use Only (FOUO) until 1100 EDT**



**Epidemiology/Surveillance**  
**Percentage of Visits for Influenza-like Illness (ILI) Reported by**  
**the US Outpatient Influenza-like Illness Surveillance Network (ILINet),**  
**National Summary 2008-09 and Previous Two Seasons**  
**novel 2009-H1N1 – 28 JUL 2009**



**Data are provisional use only (FIUO) or official use only (FOUO) until 1100 EDT**



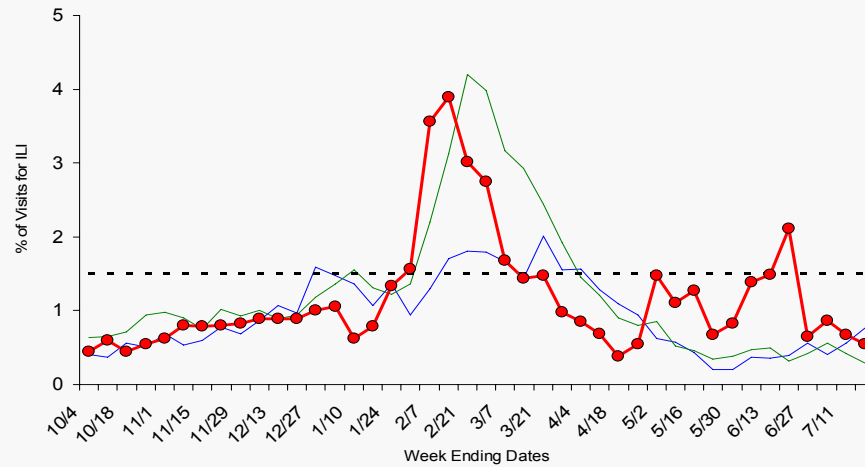
# Epidemiology/Surveillance

## Current Influenza Surveillance – ILINet Regions I-III

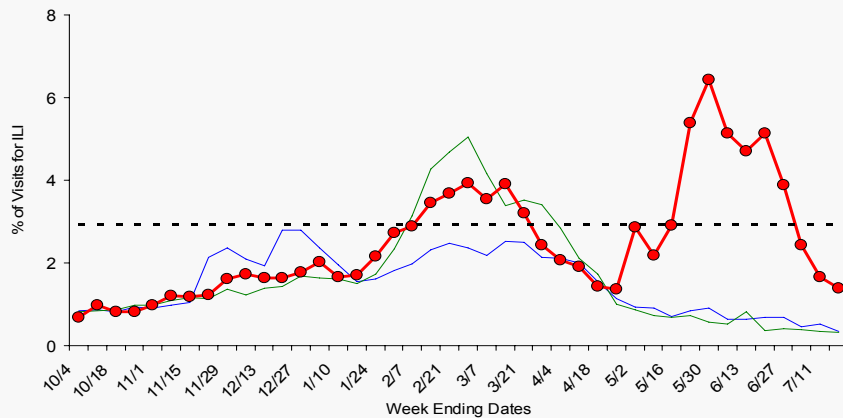
### novel 2009-H1N1 – 28 JUL 2009



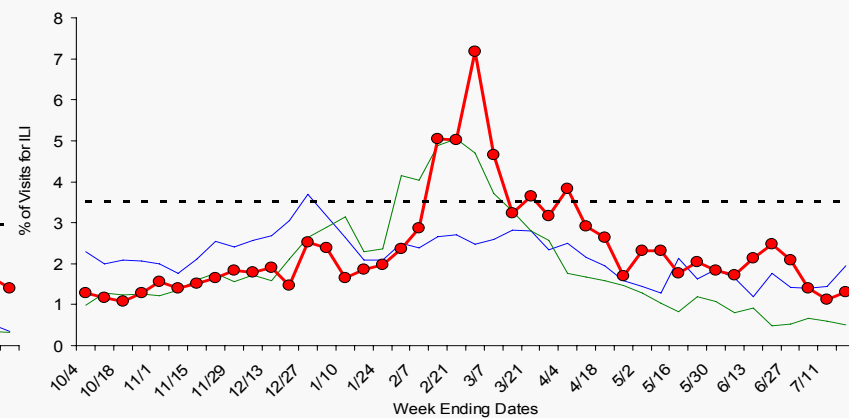
Region I - CT, ME, MA, NH, RI, VT



Region II - NJ, NY



Region III - DE, DC, MD, PA, VA, WV



Data are provisional use only (FIUO)---For Official Use Only (FOUO) until 1100 EDT

Internal Use Only (FIUO)---For Official Use Only (FOUO) NOT FOR FURTHER DISTRIBUTION -Sensitive But Unclassified (SBU)



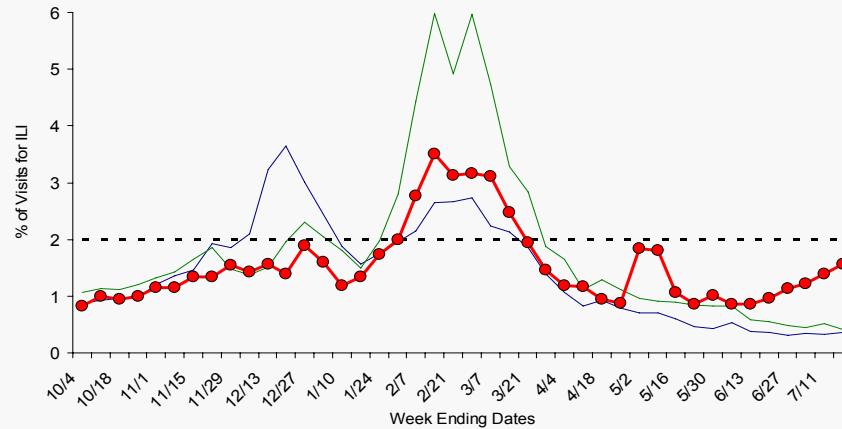
# Epidemiology/Surveillance

## Current Influenza Surveillance – ILINet Regions IV-VI

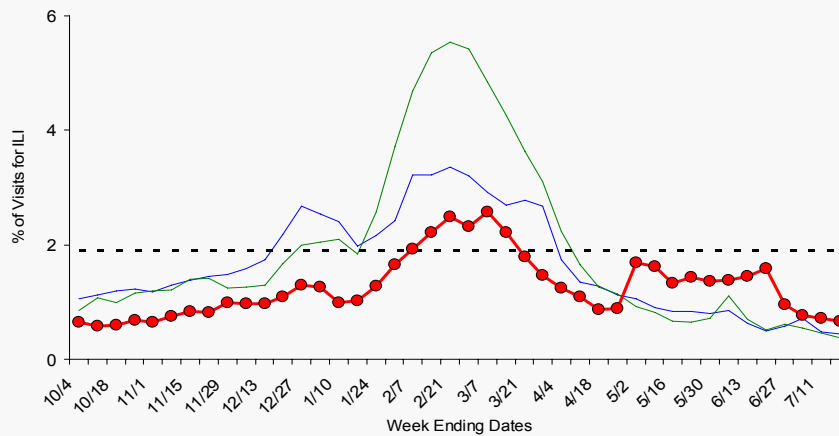
### novel 2009-H1N1 – 28 JUL 2009



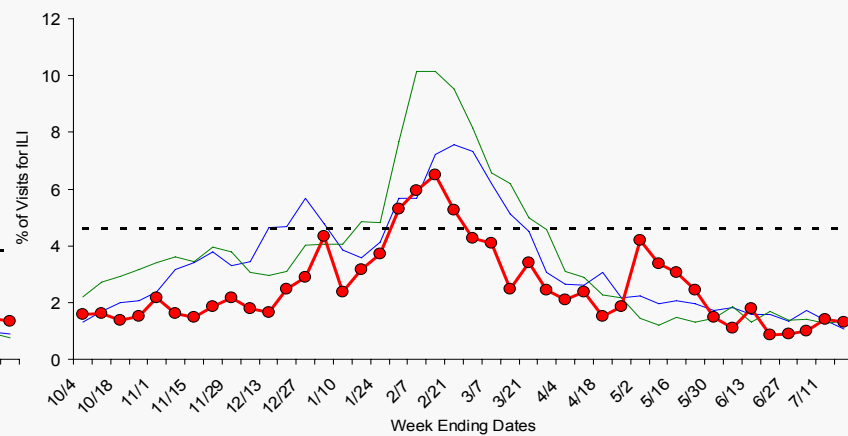
Region IV - AL, FL, GA, KY, MS, NC, SC, TN



Region V - IL, IN, MI, MN, OH, WI



Region VI - AR, LA, NM, OK, TX



Data are provisional use only (FIU) or official use only (FOUO) until 1100 EDT

Internal Use Only (FIUO)---For Official Use Only (FOUO) NOT FOR FURTHER DISTRIBUTION -Sensitive But Unclassified (SBU)



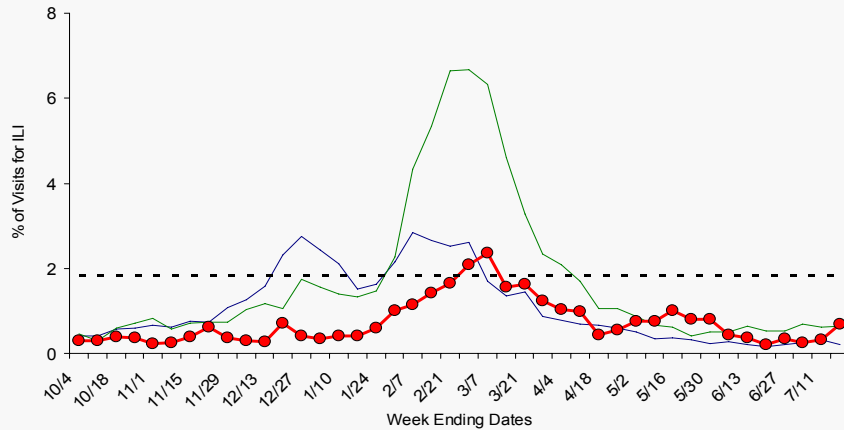
# Epidemiology/Surveillance

## Current Influenza Surveillance – ILINet Regions VII-X

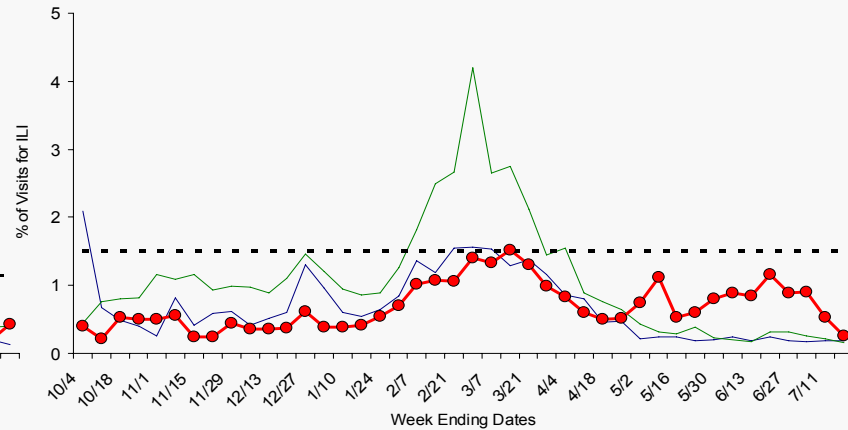
### novel 2009-H1N1 – 28 JUL 2009



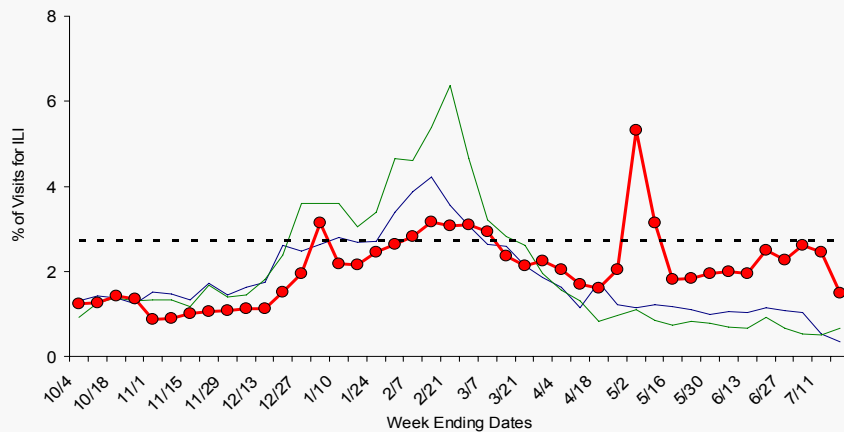
Region VII - IA, KS, MO, NE



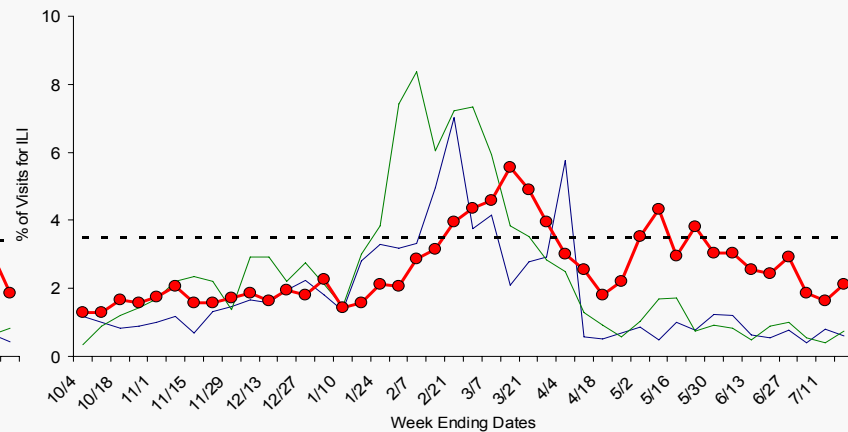
Region VIII - CO, MT, ND, SD, UT, WY



Region IX - AZ, CA, HI, NV



Region X - AK, ID, OR, WA

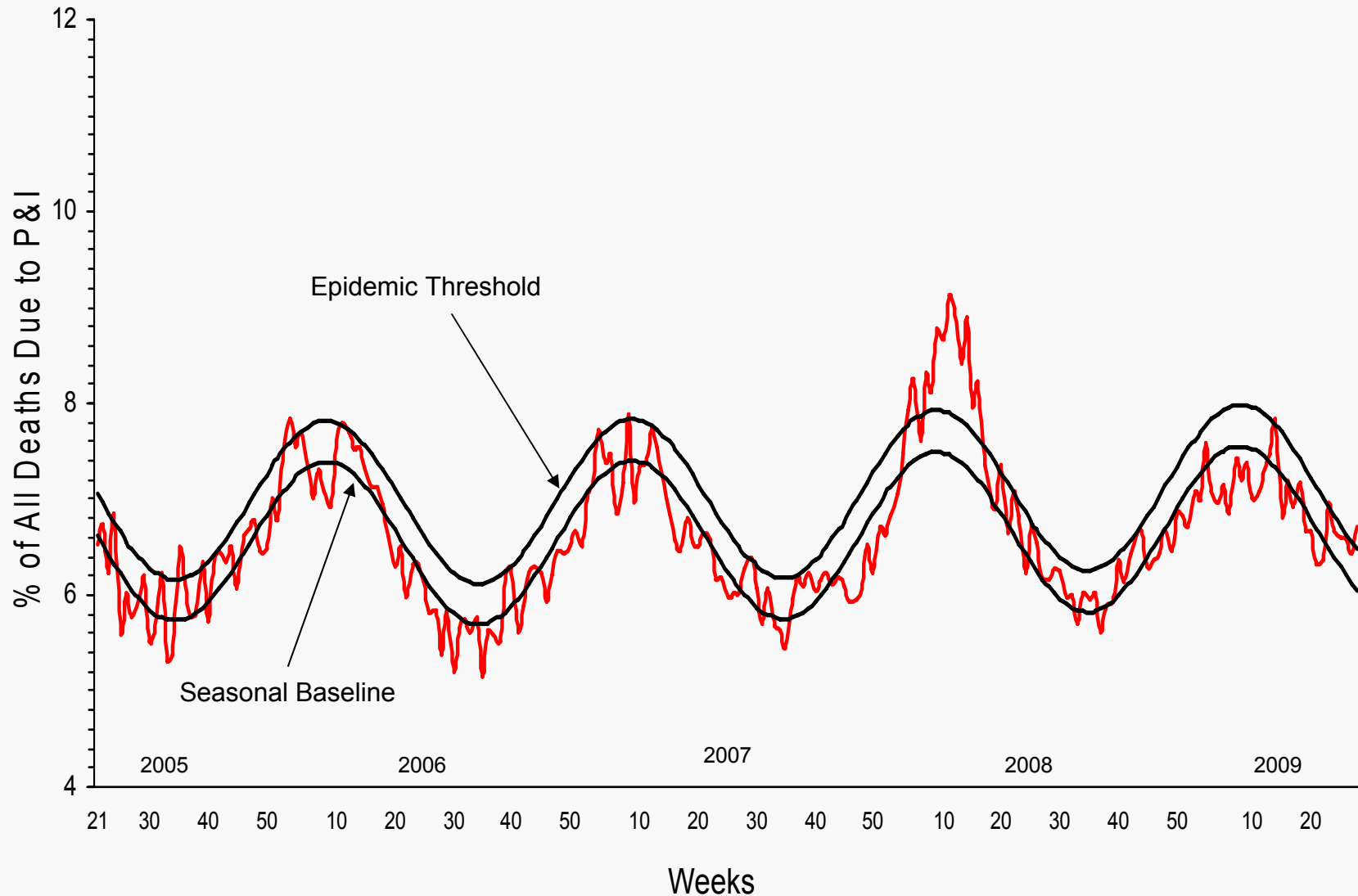


Data are provisional use only (FIU) or official use only (FOU) until 1100 EDT

Internal Use Only (FIU)---For Official Use Only (FOU) NOT FOR FURTHER DISTRIBUTION -Sensitive But Unclassified (SBU)



Epidemiology/Surveillance  
*Pneumonia and Influenza Mortality for 122 U.S. Cities*  
Week Ending 07/18/2009  
novel 2009-H1N1 – 28 JUL 2009



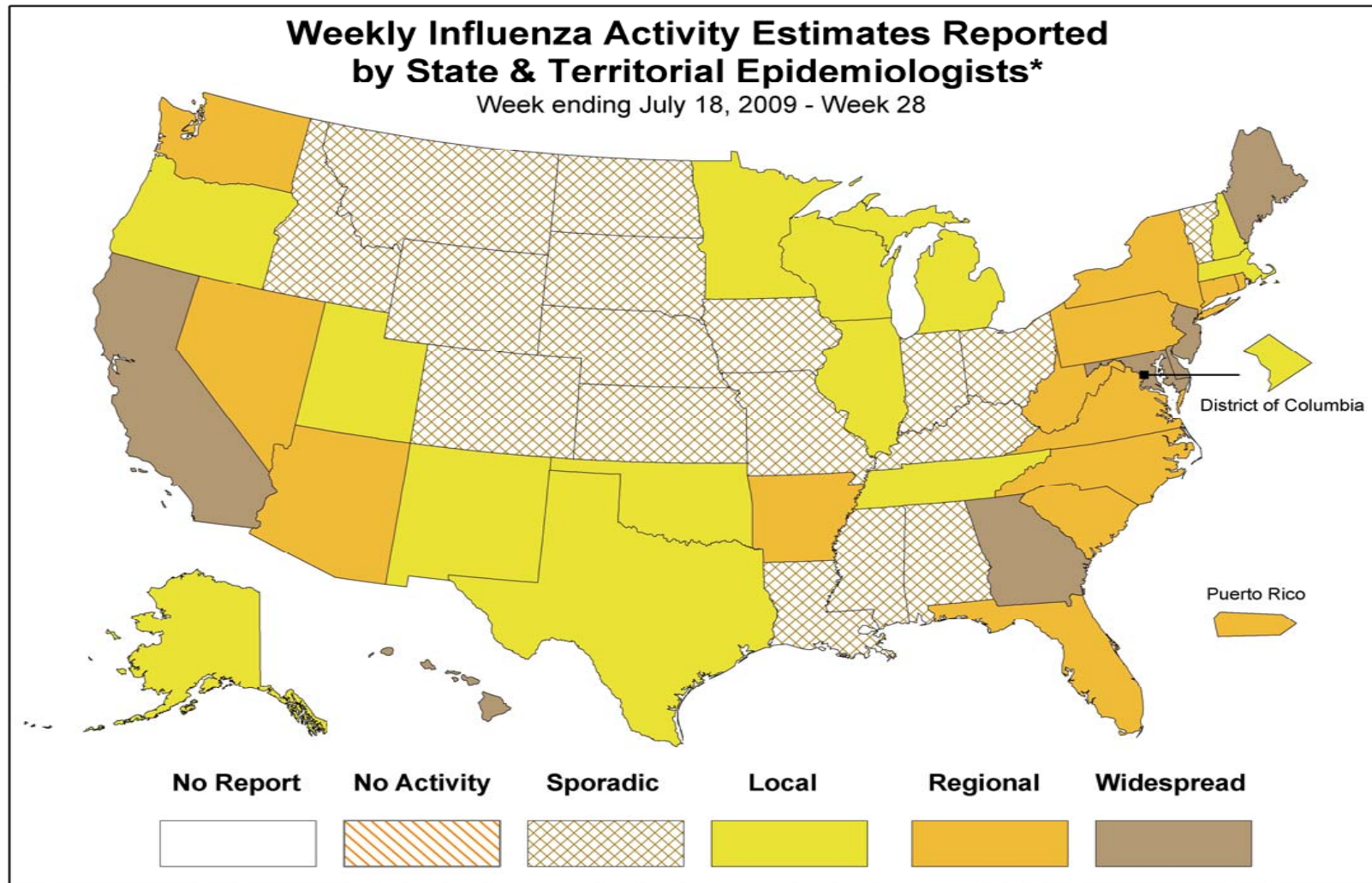
Data are provisional use only (FIUO) official use only (FOUO) until 1100 EDT

Internal Use Only (FIUO)---For Official Use Only (FOUO) NOT FOR FURTHER DISTRIBUTION -Sensitive But Unclassified (SBU)



# Epidemiology/Surveillance

## Weekly Influenza Activity Reported by SLTT's novel 2009-H1N1 – 28 JUL 2009



\* This map indicates geographic spread & does not measure the severity of influenza activity

Data are provisional use only (FIUO)---For Official Use Only (FOUO) until 1100 EDT

Internal Use Only (FIUO)---For Official Use Only (FOUO) NOT FOR FURTHER DISTRIBUTION -Sensitive But Unclassified (SBU)